



Storeroom2010

An Island charity dedicated to helping Island people

GENERAL REPORT 2023

**Serving our Island community
and helping the environment**

Cowes Men's Shed

A Community Project brought to the Island by Storeroom2010. Generously supported by various local and national funders, including the National Lottery Reaching Communities Fund



Storeroom Main Objectives

Our three main objectives are:

1) The prevention and relief of poverty by supplying donated furniture and household goods at minimal cost to people in need.

2) The protection and preservation of the environment by encouraging re-use / recycling of donated furniture and household goods.

3) The relief of unemployment for the benefit of the public in such ways as may be thought fit; including the provision of training, employment, work experience and volunteering opportunities.

Storeroom Mission Statement

To provide and support the improvement of economic and environmental wellbeing through the reuse of items and materials.

Using furniture donated by Island residents, we are able to offer a good variety of items, at competitive prices, to those who are less fortunate, enabling all to make their living space into a home.

We empower individuals from many backgrounds to find the confidence to work within a team, encouraging self-development and aiming to increase their self-esteem.

By collecting donations of household items, we are diverting possible treasures from the landfill site, keeping our environment healthy and Islanders comfortable.



2010 Storeroom

Tel: 01983 298679

www.storeroom.org.uk

an Island charity dedicated to helping Island people



Storeroom2010

The Isle of Wight's leading furniture re-use charity



**The Queen's Award
for Voluntary Service**

We are a small independent charity, operating without the benefits of statutory funding. Situated on the Isle of Wight in an area which suffers disproportionately high unemployment and child poverty compared to many other areas in the UK, Storeroom2010 enables disadvantaged families to affordably furnish their homes, improve their quality of life and keep their dignity. Our doors are open to everyone.

In June 2017 we were delighted to receive The Queen's Award for Voluntary Service, the MBE for Volunteer Groups.

At Storeroom2010, furniture (that may otherwise have been taken to Isle of Wight landfill sites) donated by Island residents is utilised, facilitating availability of affordable furnishing; this also minimises impact on the environment. Storeroom enables Island residents to reuse, thereby helping their community and the environment too. Our figures for 2023 show we have assisted with the reuse of approximately 162,000kgs of furniture and household goods, saving this from being deposited in our Island landfill. It's difficult to imagine that weight, so think of around 5,226 chest of drawers instead!

Customers in need can be referred to Storeroom by one of around 40-50 support agencies (statutory and voluntary) across the IOW; referred clients then benefit from a discount on a substantial proportion of our stock, on our already very reasonable prices.

Storeroom2010 provides volunteer opportunities and work experience to those seeking a route to employment; enabling people to build confidence and transferable skills within a framework of support. We have seen people 'change' over the space of just a few days and become more socially interactive and pleased they have found something they can do and enjoy. Since we opened in 2010, over 50 people have moved into paid work from a volunteer or work experience position at Storeroom.

The Island Probation Service send clients to Storeroom who are required to work unpaid hours. Community Payback Individuals often find themselves motivated by the industrious, but enjoyable community environment at Storeroom2010 and some stay on as volunteers.



*1 Mariners Way, Cowes, PO31 8PD
Open Tuesday to Saturday 10am-4pm*

Keeping Storeroom2010 open to everyone who would benefit from affordable furniture is our main priority.

In a nutshell the purpose of Storeroom2010 charity and its objectives are threefold: -

- The prevention and relief of poverty by supplying donated furniture and household goods at minimal cost to people in need.
- The protection and preservation of the environment by encouraging re-use/recycling of donated furniture and household goods.
- The relief of unemployment for the benefit of the public in such ways as may be thought fit, including the provision of training, employment, work experience and volunteering opportunities.



Storeroom is different from other charities which collect furniture for re-sale, as they are often looking to achieve the best possible profits to help their cause/purpose. Storeroom simply wants furniture which can then be offered at affordable prices to those in our community who really need it.

In Summer 2023 we celebrated our 13th birthday. We are very proud of all we have achieved in these years, including the purchase of our current Cowes Men's Sheds premises in 2015 (loan from NatWest, funding from Clothworkers Foundation) and in 2016 the purchase of our main premises (loan from SASC and funding from Power to Change and Garfield Weston Foundation). These purchases have helped to secure Storeroom's future for the benefit of the Isle of Wight Community.

From January 2014 to April 2018, Storeroom ran a Skills Gap training project, sadly this closed due to insufficient forward funding. Grant monies were received from many generous funders both on and off the Isle of Wight, which helped Storeroom2010 to finance the Education Project. Teaching staff were employed as required and we saw 678 learners. Of these, 152 people attended for an activity and 526 learners took an accredited course and gained a certificate to show prospective employers their achievement. The learners' new trades-based skills would have helped them in their home lives as well as with employment opportunities. Around 20% of the learners went on into employment, self-employment, or further education when they finished their course, or in some cases, courses. Storeroom Education was a registered NOCN Centre No. 30000877.



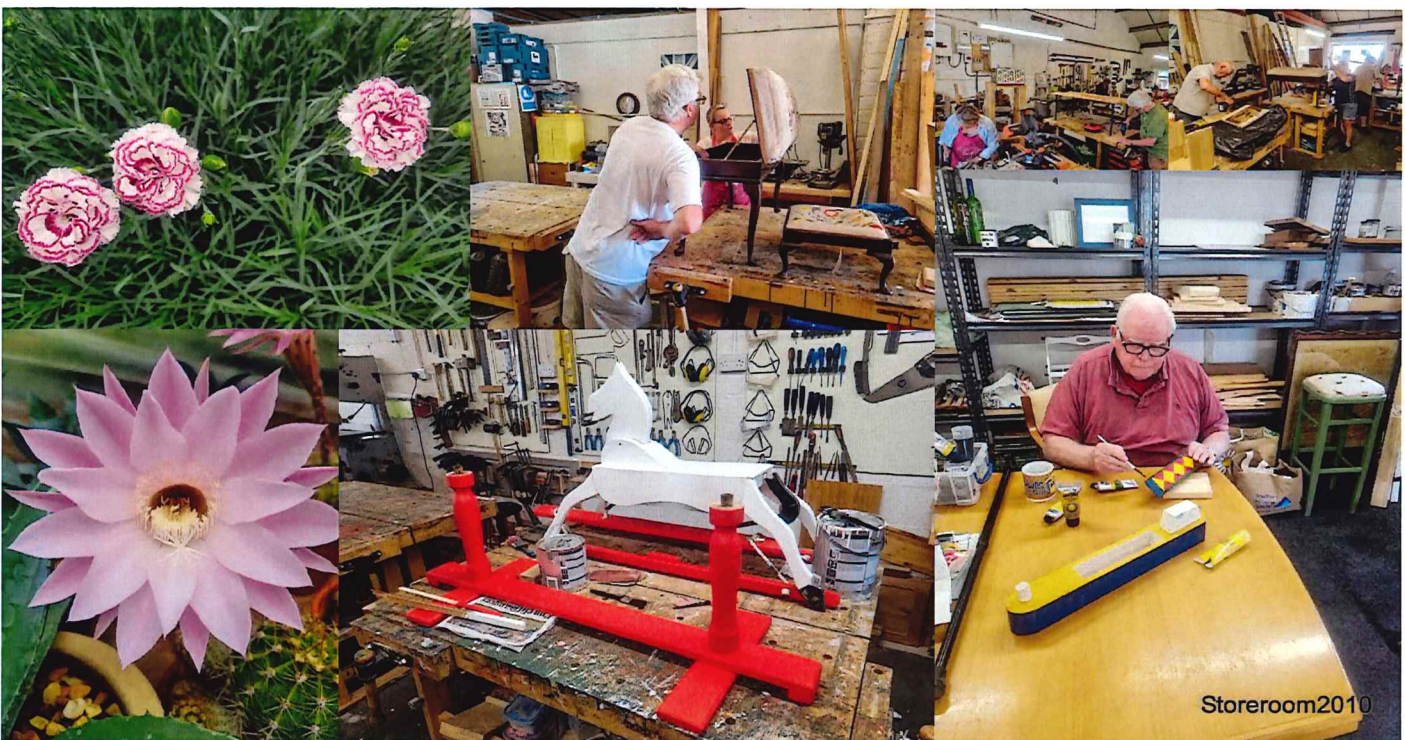
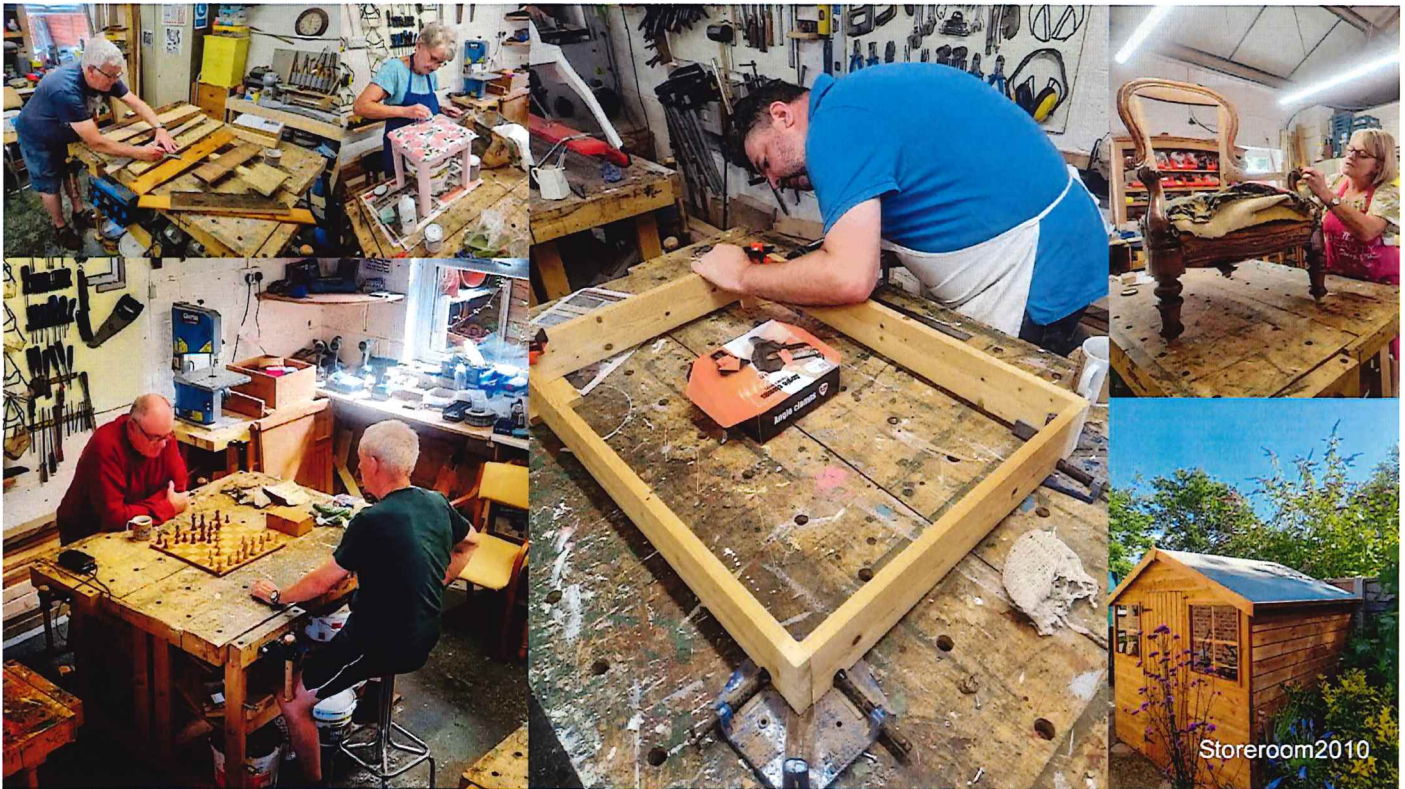
Storeroom received the IW Chamber of Commerce, Business Awards for Excellence in the Business in the Community Awards 2016.

We also met Fred Dinenage at the awards ceremony, who became our Patron.



Storeroom's current Community Project is the Cowes Men's Shed which opened in May 2018. Supported by funders, both local and national, the Shed has around 150 members aged 18+ and 27% of the members are women.

Predominantly aimed at seniors, the Shed provides a well equipped carpentry workshop, hobby room, gardens with seating area, raised beds and two glasshouses. Shedders are encouraged to enjoy the company of others, complete projects for themselves, their friends and families, or maybe assist with philanthropic projects for local churches, schools and our hospital. Some members make or refurbish items to sell at Storeroom to raise funds towards the Shed's running costs. However, we do not expect anyone to take part in any project not of their own choosing.



Our customers continue to support Storeroom charity and despite the current financial difficulties so many are experiencing, they still come to us. Without the public's unwavering loyalty and the generous donation of their free time by our volunteers, we would not be here to serve our Island Community.

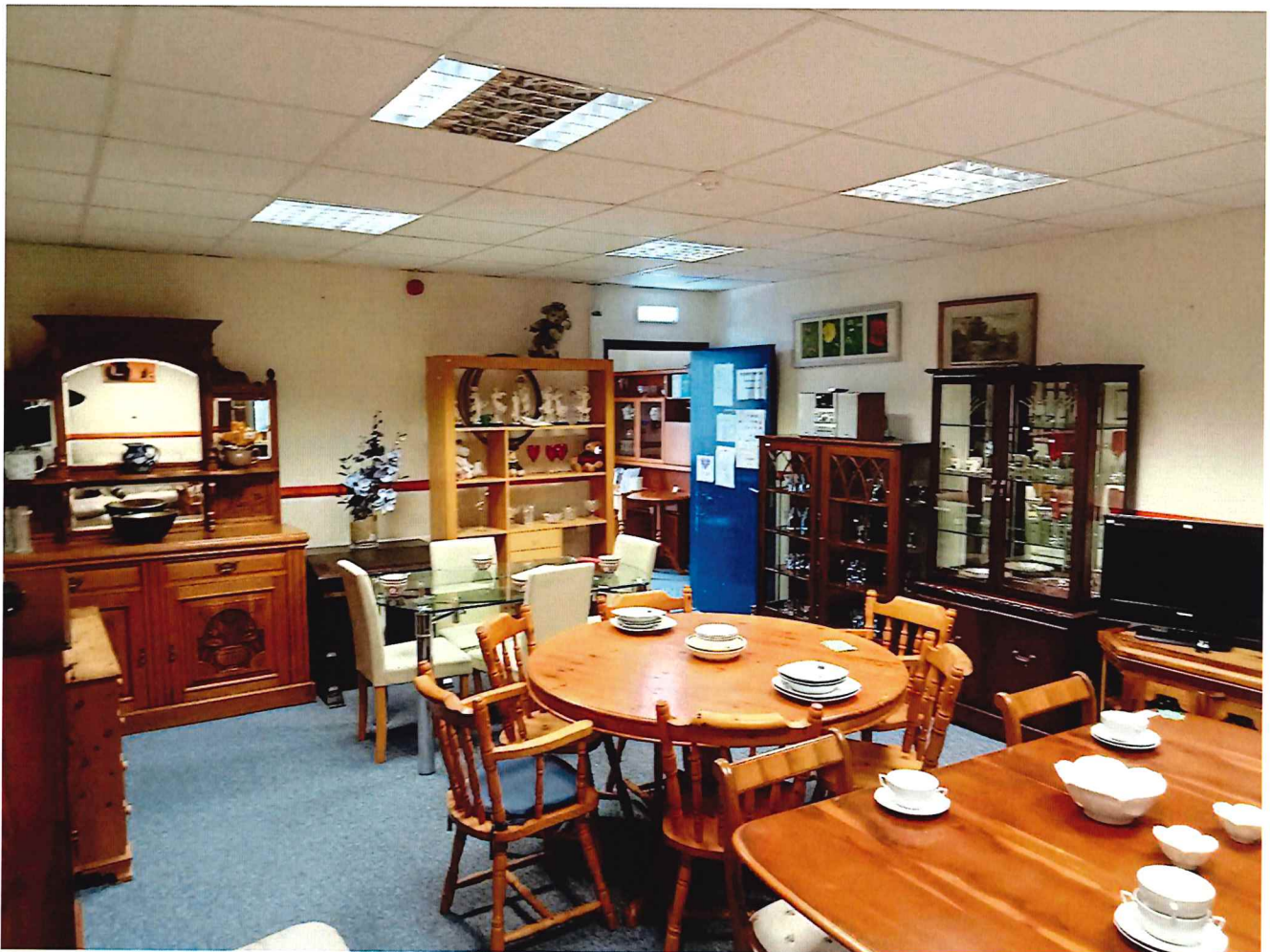
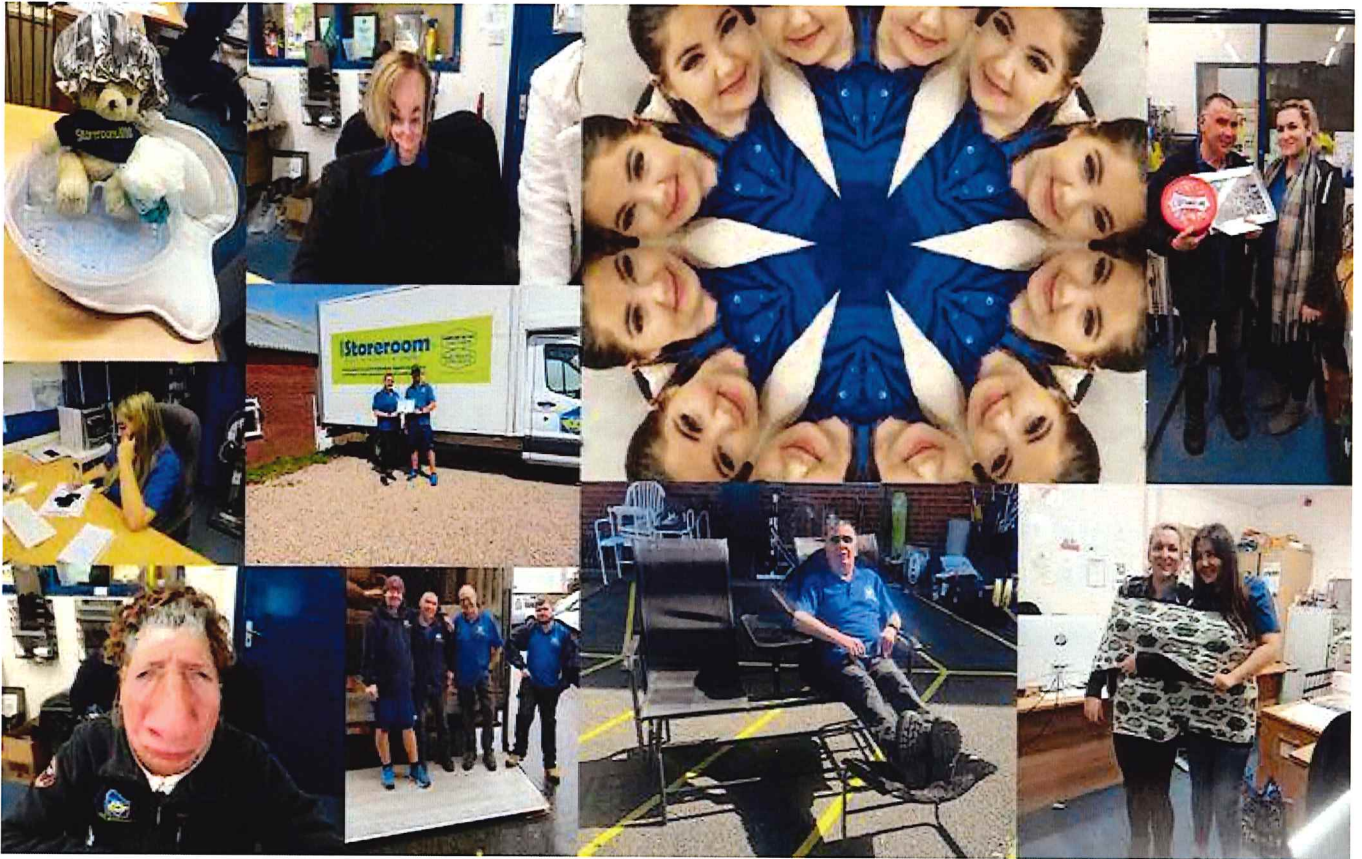
During 2023 Storeroom received referrals for 198 disadvantaged people. This group received extra discounts on basic stock items. Some people/families made no payment for the goods supplied at all, as their Housing Association were engaged in a partnership scheme with us, in order to help their most needy and vulnerable clients.

We saw over 5,600 paying customers who purchased more than 16,100 items, with a little over 2,100 people making donations of their unwanted, but reusable furniture and household goods to us.

Our Community Project received 153 visitors, including local dignitaries, and saw 1,537 member attendances over the year.







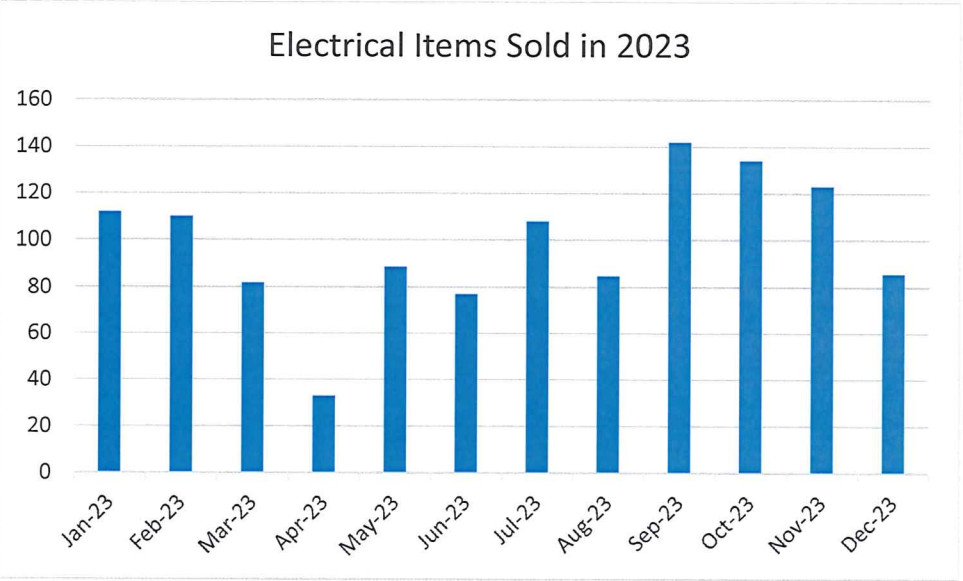
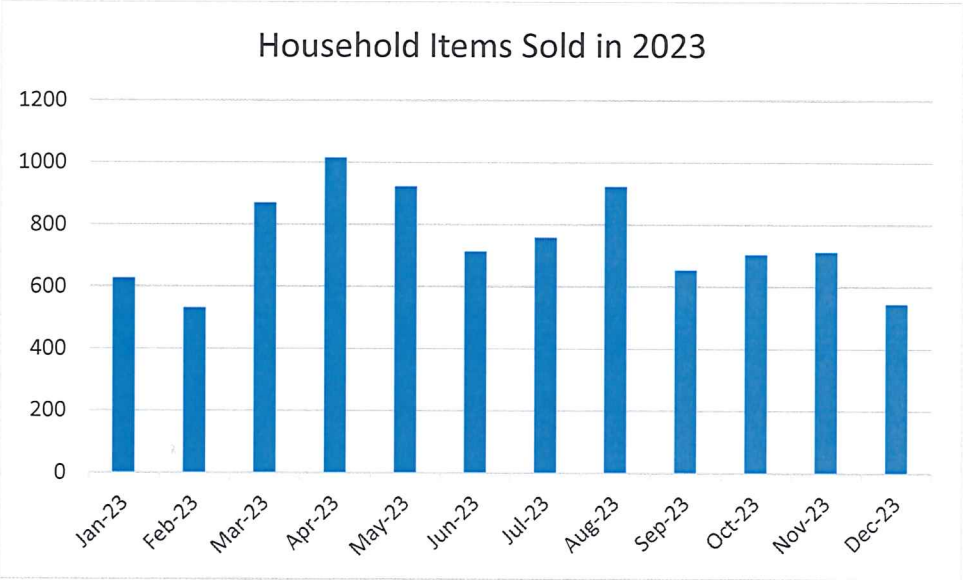
Last year the Reuse sector: -

| | | | |
|---|---|---|--|
| Employs over 4,300 staff | Saves over 96,000 tonnes of CO ² | Supports around 13,500 volunteers | Provides training to around 35,300 trainees |
| Helps around 1.5 million low income households | Diverts 89,920 tonnes of waste from landfill | Reuses 2.6 million items of furniture and electrical equipment | |

During 2023 Storeroom2010: -

| | | |
|---|--|--|
| Employed: 11 staff | Assisted: 198 disadvantaged people who were referred to us | Supported: 23 volunteers and work experience placements |
| Helped: over 5,300 low income households | Diverted: over 161,000kgs of reusable furniture and household goods from landfill | Re-used: over 16,000 items of furniture and household goods |

Sales 2023



Friends of Storeroom2010

Our friends support us in the delivery of our services.

Sovereign Network group

Sovereign works in partnership with Storeroom to supply furniture and household goods to their clients.



Southern Housing

Southern Housing works in partnership with Storeroom to supply furniture and household goods to their clients.



The National Lottery Reaching Communities Fund

The National Lottery is currently helping to fund The Cowes Men's Shed, Storeroom's current community project. The Lottery also generously supported our previous project Storeroom Education.



Northwood Village Website

The Northwood Village website carry articles about Storeroom and the Cowes Men's Shed on their village news page.



Reuse Network

Storeroom has been a member of the Reuse Network since we commenced trading in 2010. We benefit from their help and advice on a regular basis and use their Product Weight Protocol (tonnage tables).



IW Chamber of Commerce

The Chamber of Commerce is a membership organisation, which represents and promotes the interests of, and meets the needs of its diverse membership by providing a quality assured range of services.



Wightbay

This local website offers very good value advertising opportunities. We usually have 70-100 items offered for sale on it. The site also brings new customers to our door, who might otherwise not have found our slightly out of the way premises.



The Footprint Trust

The Footprint Trust is a local charity that works with the community on a number of practical projects. They help people reduce their energy usage and keep warm and well whilst saving money. They were our very first supporters!



Power to Change

Power to Change is an independent charitable trust that supports and develops community businesses in England.

No one understands a community better than the people who live there. Power to Change work with community businesses to revive local assets, protect the services people rely on, and address local needs.



Community Action Isle of Wight

Community Action IW believes in the strength and ability of Island communities, in charitable endeavour, in voluntary action, and in not for profit motives.

CAIW exist to support the 1,500 or more voluntary and community organisations that work so hard for the benefit of the Island and its residents. CAIW aim to support the maintenance and development of community amenities and services, to help the Island have thriving communities where people get involved, help each other, and have access to the services they need.



**Community
Action
Isle of Wight**
at the Riverside



SNG (Sovereign Network Group) formerly Sovereign, are a leading housing association, striving to provide quality, affordable homes in happy, successful places.

They have deep roots in the south of England, with almost 60,000 homes focused in the south, south west and the Isle of Wight - and 84,000 in total across SNG with the addition of homes in London and Hertfordshire following their merger with Network Homes.

Sovereign are driven by their social purpose, with residents at the heart of everything they do. They build homes and provide great services, but their work doesn't stop at the front door – SNG invest for the long-term, creating great places to live, working with residents and partners to support them in realising their potential.

SNG working in partnership with Storeroom2010

SNG provide a furniture grant fund to help residents in need and, since October 2021, they have worked with Storeroom to deliver this support to its residents on the island. Together we have helped over 40 of their residents, who have purchased over 200 items from Storeroom (figures to Dec 2023).

SOUTHERN HOUSING



In October 2010, a single charitable housing association, Southern Housing, was formed by bringing together Southern Housing, James Butcher Housing Association Ltd, and South Wight Housing Association Ltd.

As one of southern England's largest housing associations, they provide more than 30,000 homes for over 77,000 people.

Whether it's traditional social housing, shared ownership, affordable rent, private market rent, or outright sales, they offer a range of services to communities across the south- east of England.

Southern Housing also work with their customers and in communities to provide activities, information, and advice that improve the neighbourhoods their customers live in and their individual lives.

Southern Housing working in partnership with Storeroom 2010

Southern Housing provide a furniture and household goods fund which the Storeroom manages. Southern Housing has helped 154 of their tenants in need, by purchasing 742 items through Storeroom.

Following on from the initial success of the scheme, Southern Housing rolled this new initiative out to their mainland associations, using local charities to provide services to their new schemes.

Storeroom2010's Awards

In 2011 our first award was from Wight Mind, for our outstanding contribution to Mental Health Services on the Island; for our work in providing people recovering from mental health problems with volunteer opportunities and supporting them into work.



Our second award was from the IW Chamber of Commerce, Business Awards for Excellence – Business in the Community Award 2016.



Our third achievement was The Queen's Award for Voluntary Service, the MBE for Volunteer Groups, received in 2017.



Our most recent achievement is from the Isle of Wight Radio, Best in Business Awards 2022, where we were Highly Commended for the Best Green/Eco Business of the year.



SOCIAL MEDIA



Facebook

To find us on Facebook, search for Storeroom2010. When you visit our page, please don't forget to hit the **LIKE** button!

You will find some fun posts on our Facebook page.

Wednesday - we play a word anagram game; the item is hidden in the picture we have posted.

Saturday - "Trackdown Ted" often likes to hide around the shop and warehouse.

And here is Ted!



Sunday - we have a quiz. We post a cropped photo of an item, and our Facebook followers try to work out what it is. Answers are always shown on Monday mornings.



Storeroom2010 Selling Page



Also, on Facebook we have "Storeroom2010 selling page". On this page we mostly show our current available stock for sale. No measurements, just pictures and prices. Messages or comments are welcome!

**Local Furniture
Reuse Charity**

Bag a Bargain and be a Green Machine!

Remember, Re-use Rules!

Support YOUR local charity

Recycle, upcycle, repurpose—it's the new green

LOW PRICES

Storeroom2010 Selling Page
2.2K followers • 0 following

Message Following Search

Photos See All Photos

Storeroom2010 Selling Page
21 Nov

Seta bed £75

Boost this post to reach up to 4167 more people if you spend £42. Boost post



We mostly post stock advertisements and information updates. We like to get involved with the latest hashtags when relevant events are trending.

Storeroom2010 @Storeroom2010 · Dec 2, 2023
Here is your monthly bitesize roundup of how we all helped in November.
Over 300 volunteer hours worked!
More than 1,300 Items sold and almost 850 donated!
And over 13,500kgs saved from landfill! (That is over 200 sofas! WOW)
[#ReuseRules](#)



0 1 30 1

Storeroom2010 @Storeroom2010 · Nov 21, 2023
Happy Tuesday!!!
Need somewhere to keep warm this winter?
We have a great team here who would love to welcome a new face!!
Come along, get involved and meet new people!



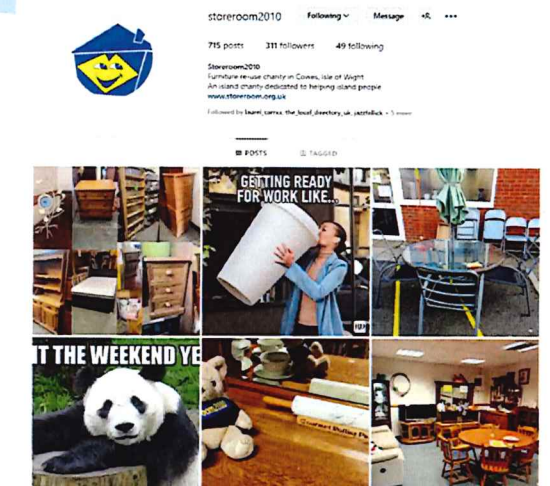
0 1 25 1

To find us on Twitter, search for @Storeoom2010

Instagram

If you prefer to look at mostly photos, newsletter updates, monthly reports, and stock availability – this is the place to go!

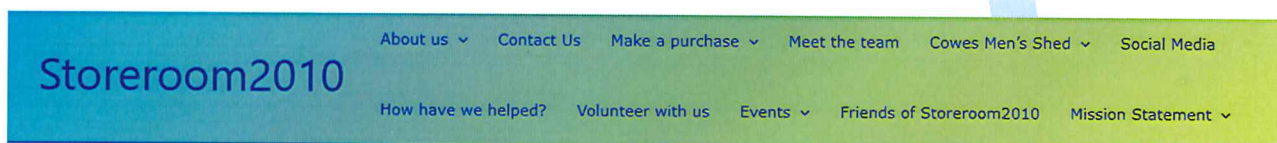
To find us on Instagram, search for @storeroom2010



Storerroom2010 website

Find us at www.storerroom.org.uk

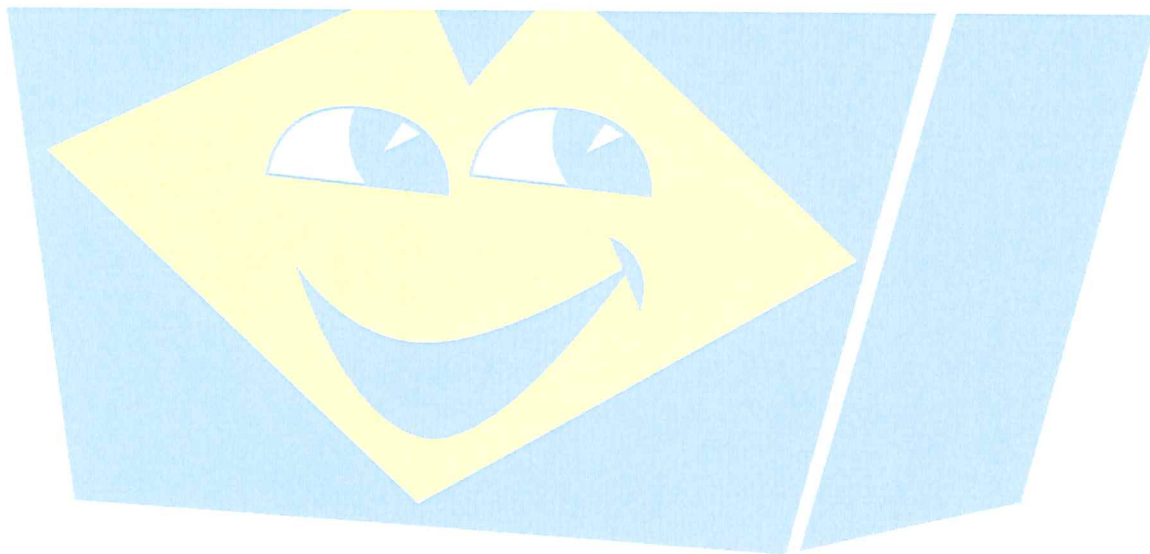
Lots of information about us, how to contact us and make a purchase AND a page to meet our wonderful team!

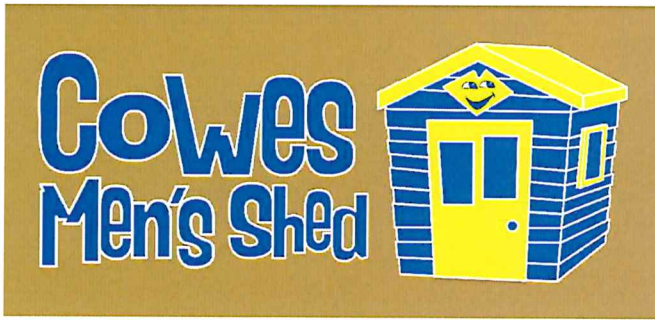


Storerroom2010

An Island Charity dedicated to helping Island people!

Company Number 7488966





When Men's Sheds thrive,
they change lives.
Support the movement at
www.menssheds.org.uk



The Cowes Men's Shed

We are members of the UKMSA (UK Men's Sheds Association) and our Shed has the longest opening hours of any on the Isle of Wight; Monday to Friday, 10am-3pm. We offer free membership to everyone aged 18+, so that no one in our community is excluded. Despite the name, at present women currently form 27% of our total membership, which as of December 2023 stood at 148. Currently we see up to ten people attending our Shed over the course of any one day, more if we hold an event.

The Shed opened on 14 May 2018; a community project brought to you by Storeroom2010 furniture reuse charity and supported by various local and national funders. The Shed has a carpentry workshop, which is very well equipped, exterior horticulture area with raised beds, two glasshouses, seating area, red squirrel and bird feeding stations. Over the years we have received many kind donations of items such as chop saws, pillar drills, a table router, lathes and more for the carpentry workshop, also some shrubs and plants for the horticulture areas from our members. We have purchased larger equipment with monies from various funders who were happy to help.

Men in Sheds is a great concept and there is a national organisation (UKMSA) which offers us support in making Cowes into a great Shed! The negative impact of loneliness and social isolation on mental and physical health are well documented. Surveys from Mental Health Charities have found millions of people feel lonely on a daily basis. Men typically find it more difficult to build social connections and rarely share personal concerns or worries. Sheds are about meeting like-minded people and possibly having someone to share your worries with too. Men are more likely to talk about their troubles when working shoulder to shoulder with others.

A Men's Shed (or Shed) is similar to a garden shed – a place to pursue practical interests at leisure, to practice skills and enjoy making and mending. The difference is that garden sheds and their activities are often solitary in nature, while Men's Sheds are the opposite. They're about social connections and friendship building, sharing skills and knowledge, and of course, a lot of laughter. Sheds are whatever the members (or Sheddors as they are called) want them to be. Whatever the activity, the essence of a Shed is not a building, but the connections and relationships between its members.

Sheds can also mean having fun again, sharing skills and knowledge, gaining a renewed sense of purpose (often lost when people retire) and belonging. Typical activities in Sheds vary greatly, but at Cowes Men's Shed we offer carpentry and horticulture activities all year round. People can try out new activities or rediscover old hobbies, utilise their skills and share learning, enjoy the company of others and maybe become more active too. There is parking locally, and the Cowes Park and Ride Bus Stop is just a two minute walk along the road; so easy access for everyone.

In a recent anonymous member survey we asked 'What do you think are the main benefits you gain from visiting the Shed?'

Responses included:- "Happiness". "Feeling useful". "Feeling like I matter". "Feeling important". "Feeling human". "Feeling less lonely". "Feeling fitter". "Meeting people". "Laughter".

94% of respondents said that they felt happier since joining the Shed, 63% felt fitter, 88% felt their health and well-being have improved.

The comments our 'Shedders' have made in our confidential surveys about how the Shed has changed their lives for the better, are really heart-warming: -

- Open all week, daytime hours. This place is perfect.
- (Member's daughter) He's a changed man. He really enjoys coming here. He's also able to pass his knowledge on. It's like he's found his purpose again.
- My wife says she hasn't seen me this excited about something for years. She says this place has been a godsend.
- It's like going to work but without all the aggravation. Only nice people. The Shed has worked wonders for my wife's mental health, we're turning into our old selves again.
- I finished work and it was like 'well, what am I supposed to do now – just stay at home and watch telly?' Finishing work was like having a stone tied to you and being thrown into water. But I really have got purpose again now.
- This place has saved me – more than you could know.

Predominantly, this community project addresses the issues of isolation and loneliness. It helps prevent people from succumbing to boredom or depression through lack of social interaction. For those who are unemployed it helps with confidence building. There are over 800,000 chronically lonely people in the country and their situation impacts on their health. Nationally the ageing percentage of our population who are over 65 is growing and with this growth are health and depression issues from retirees who feel they have lost their personal identity and purpose. 27% of people on the Isle of Wight are older than 65 and one in six households on the Isle of Wight is occupied by a person aged 65 or older, living alone.

According to the Royal College of General Practitioners, "Loneliness poses a greater risk to health than diabetes".

The Shed Project's objective is to provide a comfortable, safe place where people who need company can go to combat feelings of isolation and depression and can meet others, socialise, practice hobbies; they can make things and drink a cuppa together! 'Shedders' are often retired, but anyone aged 18+ is welcomed. We have seen unemployed people gain confidence and be able to establish new routines and social skills, which have helped in securing paid work. Retired people have a wealth of knowledge they can pass onto the younger generation, helping them in many ways – and vice versa.

Our Shed Project is an innovative response to the many issues mentioned within this document. We find that other Men in Sheds Projects on the Island are not really fulfilling the original concept of being there for people when they need company. We are providing somewhere people can go to make a positive difference by working on projects for other charities and good causes. We are open 5 days a week, 50 weeks a year and enable people to dabble in carpentry and horticulture projects as they wish. 'Shedders' participating may want to help upcycle, repair furniture or assist with horticultural projects where items could be sold to raise funds for the Shed, but this is not compulsory, we never expect our members to take on a project not of their own choosing. Some members decide to make bird boxes and garden trugs all out of wood scraps and bits of old pallets, ready for Storeroom to sell to support the Shed, along with plants grown in the gardens and glasshouses.

We believe Storeroom2010's Cowes Men's Shed will continue to gain in popularity, providing companionship and company for people of all ages over 18, but especially to retired people who suffer from loneliness and isolation, the client target group we are advertising to attract. Over the next ten years, it is expected that the number of 65 to 79 year olds will increase by nearly 17%, while the over 85s will increase by 40%.

Many of this group are lonely or bored, some suffering with mental health issues which could be helped by getting out, meeting people and participating in projects for community good causes. The UKMSA, believe older people, especially men, can benefit from the company, conversation, creativity and connections that a Shed environment can provide. It is said that Sheds are playing a particularly important part in meeting the needs of older people – particularly older men, who often feel that traditional services targeted at older

people are not right for them. The creative, productive nature of Sheds provides an activity around which people can form bonds and networks, which go on to benefit them outside of the Shed itself.

Engaging people in our gardens has had a noticeably therapeutic effect. Many members do not have access to a garden and do not wish to travel to any public green spaces. Introducing them to the Shed, allowing them to enjoy the sunshine, the bird song and other wildlife is a breath of fresh air that has a positive effect on their physical and mental health. Inspiring people to participate in altruistic projects in the workshop fosters a sense of togetherness and giving something back to their community. It really is about building up the confidence and self-worth of people who have faced a series of hardships during this ongoing period of Covid-19. We are helping people who may be feeling totally alone, seeing that they are happy and have what they need; letting our community know that there are people who care about their health and well-being.





Cowes Men's Shed



The Cowes Men's Shed is a Community Project brought to the Island by Storerroom2010 and generously supported financially for several years by the National Lottery Reaching Communities Fund. Established in 2018, the Shed's main aim is to address issues of isolation and loneliness. Membership is free and the Shed is open to everyone over the age of 18.

27% of CMS members are women.

The majority of CMS members are of retirement age.

The Cowes Men's Shed is a safe, comfortable, well-equipped place.

CMS is a member of the UK Men's Sheds Association.

At the Cowes Men's Shed members are encouraged to create, converse and connect!

Having fun again, laughter, sharing skills and knowledge can help to add years to life and life to years.

Carpentry Workshop

Glasshouses & Gardens

Craft Area

UK Men's Shed Association: -

This is the support body for Men's Sheds across the UK. They raise awareness of Men's Sheds and the life changing impact they can have. They support Men's Sheds to develop and thrive. They won't stop until every man who would benefit from a Men's Shed has access to one.

Men's Sheds are vital

| | | | |
|--|------------------------------------|--|------------------------------|
| 586 Men's Sheds open in the UK | 141 Sheds in development | 14,064 Estimated families benefitting directly | 2013 UKMSA founded |
|--|------------------------------------|--|------------------------------|

During 2023

Cowes Men's Shed: -

| | | |
|---|--|--------------------------------------|
| New members: 18 | Percentage male/female: 73/27 | Shed sales : £3,832 |
| Charitable projects: 5 | Member attendances: 1,537 | Visitors: 153 |